

# BIOCLIMATIC PERGOLAS

# THE SKY IS NOT THE LIMIT YOUR MIND IS.

Once we accept our limits we go beyond them.

Our Bioclimatic Pergolas covers a vast array of specialties touching virtually all aspects of life. Product reform is categorised into disciplines representing designated areas of interest. Civil, mechanical, electrical and electronic engineering are among the self-controls we include on our design. Thus, 'RISING Shading Systems' is the correct address for a partnership in this industry and is capable of providing a wide range of responsive shading product.



# B CUBE CLASSIC

Judged over a period of time to be of the highest quality and outstanding of its kind.

Innovative space saver, gives the flexibility of creating a comfortable and cosy outdoor living space with unique add-ons. The fully automated Bioclimatic aerofoil louvres can adjust the shading on your terrace by rotating and retracting operation. When fully closed the top area becomes totally water-resistant.

A restrained gutter catches the rainwater and makes it drain directly in the vertical posts. Sidewall screens (optionally integrated), can keep out the cold and wind, making the space home-like. The bioclimatic pergola can be used as a lean-to-wall module.

**Ideal for:** Hotels, bars and premium leisure industry along with detached, semi-detached private houses.

**Max width:** 4000 mm

**Max projection:** 7030 mm

**28 sqm** Maximum Coverage on a Single System

## Available Options



Linear LED Lighting System



Sun Sensor



Heat Insulated Aerofoil Louvres



Wind Sensor



Anodised Surface Treatment



Patio Heaters



Selective Wood Coating



RAL Choice of Non-standard RAL Colours



Ballcony Glass & Glazing Systems



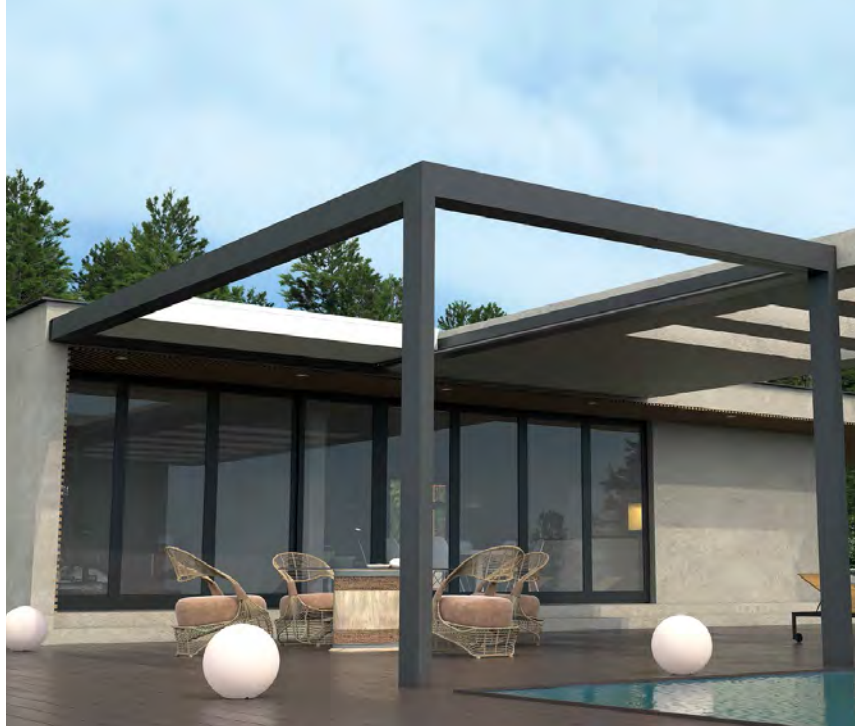
Aluminium Doors



Aluminium Windows



Integrated Speaker Module Rising Audio System







## B CUBE FREEDOM

A special privilege. The state of the art that not being subject to any restriction.

A totally independent Bioclimatic Pergola system with its own supportive posts, given you the opportunity to cover maximum area with minimal effort. Freedom has been designed to cover your desired area to create a gaze of your dreams with selections of colours and accessories. The fully automated Bioclimatic aerofoil louvres can adjust the shading on your terrace by rotating and retracting operation. When fully closed the top area becomes totally water-resistant.

A restrained gutter catches the rainwater and makes it drain directly in the vertical posts. Sidewall screens (optionally integrated), can keep out the cold and wind, making the space home-like.

The bioclimatic pergola can be used as a freestanding module.

**Ideal for:** Hotels, bars and premium leisure industry along with detached, semi-detached private houses.

**Max width:** 4000 mm

**Max projection:** 7030 mm

**28 sqm** Maximum Coverage on a Single System

### Available Options



Sun  
Sensor



Wind  
Sensor



Patio  
Heaters



Linear  
LED Lighting  
System



Heat Insulated  
Aerofoil Louvres



Anodised  
Surface  
Treatment



Selective  
Wood  
Coating



Choice of  
Non-standard  
RAL Colours



Ballcony  
Glass & Glazing  
Systems



Aluminium  
Doors



Aluminium  
Windows



Integrated  
Speaker Module  
Rising Audio System



## B CUBE **URBAN**

Belonging to, or relating to, a town or city. Urban is ideal in metropolitan settings. Thanks to the robust hanging system which offers a perfect solution for minimalistic appearance, creates outdoor spaces without the need of any posts in the everyday snapshots.

It gives a wonderful hang look while offering protection from the seasonal vicissitudes. It brings style and functionality to your outdoor spaces.

The fully automated Bioclimatic aerofoil louvres can adjust the shading on your terrace by rotating and retracting operation. When fully closed the top area becomes totally water-resistant.

A restrained gutter catches the rainwater and makes it drain directly in the vertical posts. Sidewall screens (optionally integrated), can keep out the cold and wind, making the space home-like.

The bioclimatic pergola can be used as a hang-to module.

**Ideal for:** Hotels, bars and premium leisure industry along with detached, semi-detached private houses.

**Max width:** 4000 mm

**Max projection:** 5050 mm

**20 sqm** Maximum Coverage on a Single System

### Available **Options**



Linear  
LED Lighting  
System



Sun  
Sensor



Heat Insulated  
Aerofoil Louvres



Wind  
Sensor



Anodised  
Surface  
Treatment



Patio  
Heaters



Selective  
Wood  
Coating



RAL  
Choice of  
Non-standard  
RAL Colours







## B CUBE INFINITY

A dimension or quantity of sufficient size to be unaffected by finite variations. Truly customisable appearance, making "Infinity" visually disappear wherever it is mounted. The design opportunities are truly endless with this option. Best way which promotes your freedom and privacy while enjoying your alfresco style outdoor experience.

The fully automated Bioclimatic aerofoil louvres can adjust the shading on your terrace by rotating and retracting operation. When fully closed the top area becomes totally water-resistant.

A restrained gutter catches the rainwater and makes it drain directly in the vertical posts. Sidewall screens (optionally integrated), can keep out the cold and wind, making the space home-like. This way you can enjoy a healthy outdoor lifestyle from the early beginning of spring till autumn.

The bioclimatic pergola can be used as an integrated & independent module.

**Ideal for:** Hotels, bars and premium leisure industry along with detached, semi-detached private houses.

**Max width:** 4000 mm

**Max projection:** 6790 mm

**28 sqm** Maximum Coverage on a Single System

### Available Options



Sun  
Sensor



Wind  
Sensor



Patio  
Heaters



Linear  
LED Lighting  
System



Heat Insulated  
Aerofoil Louvres



Anodised  
Surface  
Treatment



Selective  
Wood  
Coating



Choice of  
Non-standard  
RAL Colours



Ballcony  
Glass & Glazing  
Systems



Aluminium  
Doors



Aluminium  
Windows





 **Southwest**  
Awning Systems Pty Ltd

 **Rising**  
Shading Systems

Manufacturer of Shading Systems for Outdoor Spaces